

WEIHAI MAXPOWER SUPPLY CHAIN CO., LTD.

www.maxpower-tool.com

ADD: NO.8-1, HUIZHOU ROAD, WENDENG DISTRICT, WEIHAI CITY, SHANDONG, CHINA

MAXPOWER

2023



WOODWORKING TOOLS

 **MAXPOWER**[®]

WWW.MAXPOWER-TOOL.COM



快捷方便 对位准确

打孔工具系列，可在板材连接打孔时，精确对位，更快捷更方便

Maxpower punching tools series, can make in the plate connection punching, accurate alignment, faster and more convenient

斜孔定位打孔器



MG86951

专门用作板材拼接打孔，使板材拼接更快捷方便，将连接螺丝隐藏于斜孔，使板材拼接成品更美观

It is specially used for punching plate splicing, which makes plate splicing more convenient and fast. The connecting screw is hidden in the inclined hole to make the plate splicing more beautiful



斜孔定位打孔器相关工具

斜孔器专用钻头



MG86952

斜孔专用9毫米台阶钻头
斜孔器专用

Special 9mm step drill for inclined hole, special for inclined hole device

斜孔 盖帽



MG86953

适用于斜孔遮盖，美观大方，
保护螺丝防潮耐脏

Suitable for oblique hole cover, beautiful and generous, protect the screw moisture-proof and dirty

限位环



MG86954

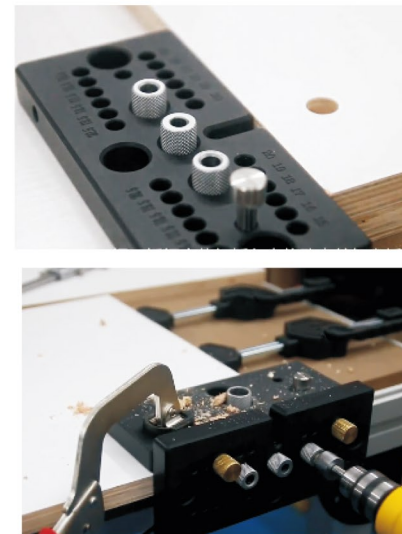
搭配钻头，钻孔时可以限制孔深，
操作方便钻孔准确，多规格可选

With the drill bit, drilling can limit the depth of the hole, easy to operate drilling accurate, multi-specifications optional

三合一开孔器



MG86955



专门用作板材拼接打孔，使板材拼接更快捷方便，将连接螺丝隐藏于板材，使板材拼接成品更美观

It is specially used for punching plate splicing, which makes the plate splicing more convenient and fast. The connecting screw is hidden in the plate to make the plate splicing more beautiful

35mm铰链开孔器



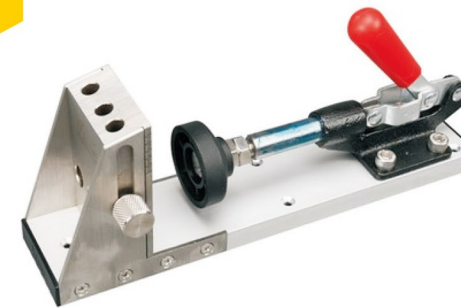
MG86959



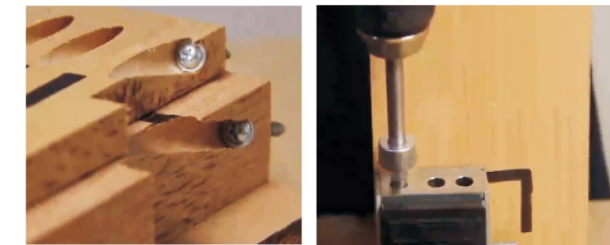
用作35mm铰链开孔，可调节限位设计，与35mm铰链精准匹配冲孔头由优质钢材锻造，冲孔锋利边沿光滑

Used for 35mm hinge hole, adjustable limit design, and 35mm hinge precision matching punching head forged by high quality steel, punching sharp edge smooth

斜孔器定位打孔器



MG86960



用于板材制作斜孔，以使板材拼接快捷美观，可调节以适用不同厚度的板材

It is used for making oblique hole of plate, to make the plate splicing fast and beautiful, and can be adjusted to suit different thickness of plate

三合一开孔器相关工具

三合一打孔器 钻套



MG86956

搭配三合一开孔器，适用于4-15mm口径钻头进行打孔

It is suitable for drilling with 4-15mm caliber bit with three-in-one drill

三合一打孔器 开孔刀



MG86957

15mm口径开孔刀，专用于三合一打孔器、用于偏心轮打孔

15MM caliber hole cutter, special for three-in-one Hole Punch, for eccentric wheel hole

连接螺丝



MG86958

专用于三合一打孔器、连接使用

It is specially used for three-in-one hole puncher and connecting

板材连接 相关工具

三尖钻头



MG86961

5-10mm口径三尖钻头，可定位钻孔锋利，更省力

3-point drill with 5-10mm caliber, can fix the drill hole, Sharp, more labor-saving

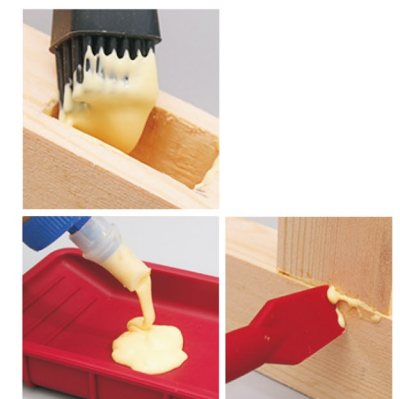
涂胶四件套



MG86962

在木工涂胶时，可帮助轻松完成对各种宽窄面涂胶工作

In woodworking gelatinize, you can help easily complete on a variety of wide and narrow surface gelatinize work



MAXPOWER

拼板夹具/
安全辅助件
safety
accessories

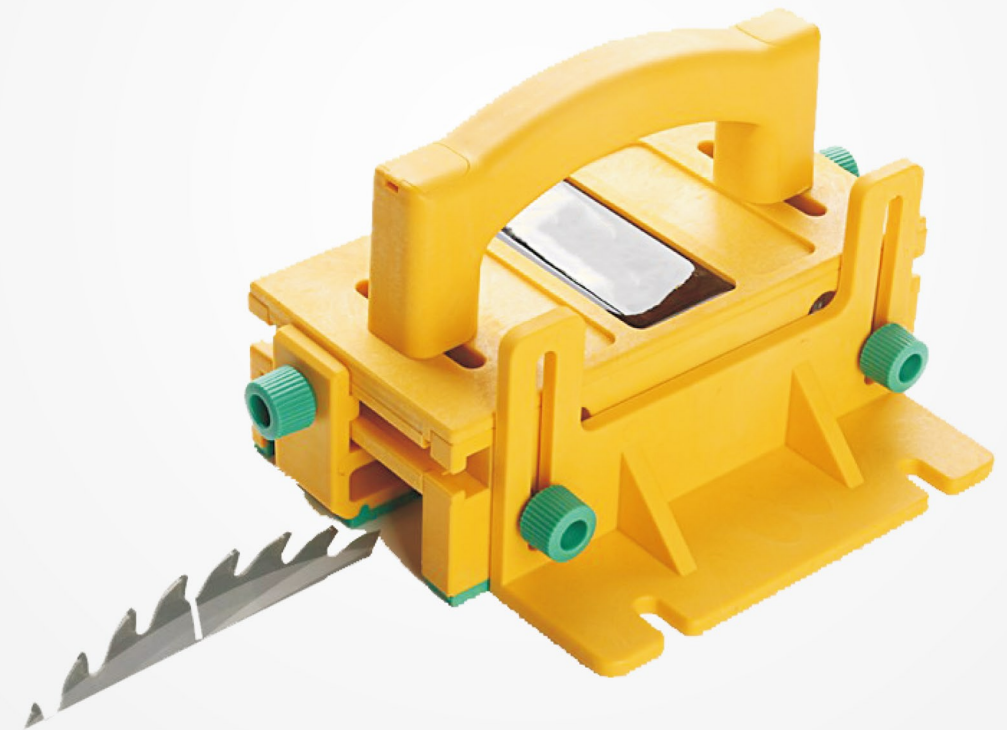
只为安全操作

操作中安全问题，一直是最需要重视的前提，
夹具安全辅助系列，让操作规范更安全

Safety in operation, has been the most need to pay attention to
the premise, fixture safety assistance series, so that
the operation of the norms more safe

踏踏实实的 安全感

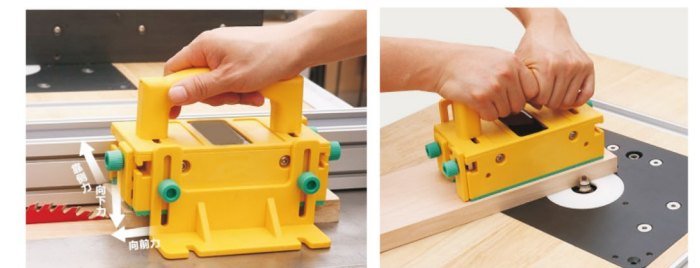
安全不仅仅是一看得见的感觉更是实实在在的操作保障



3D安全推把



MG86963



3D推把以安全设计为重要前提，提升产品稳固，让
操作更省力，安全及得心应手

With safety design as the important premise, 3D push handle
improves product stability and makes operation more
labor-saving, Safe and handy

安全羽毛板



MG86964



加长版安全羽毛板



MG86965

羽毛板可以在板材切割过程中，固定板材，令板材不后退，不倾斜，不打滑，加长版羽毛板可调节范围更长，可适应不同厚薄长短的板材

The feather plate can fix the plate in the process of cutting and sawing, so that the plate does not fall back, does not tilt, does not slip, the lengthened feather plate can adjust the range longer, can adapt to different thickness and length of the plate

桌面夹



MG86967

C型钳



MG86968

压块

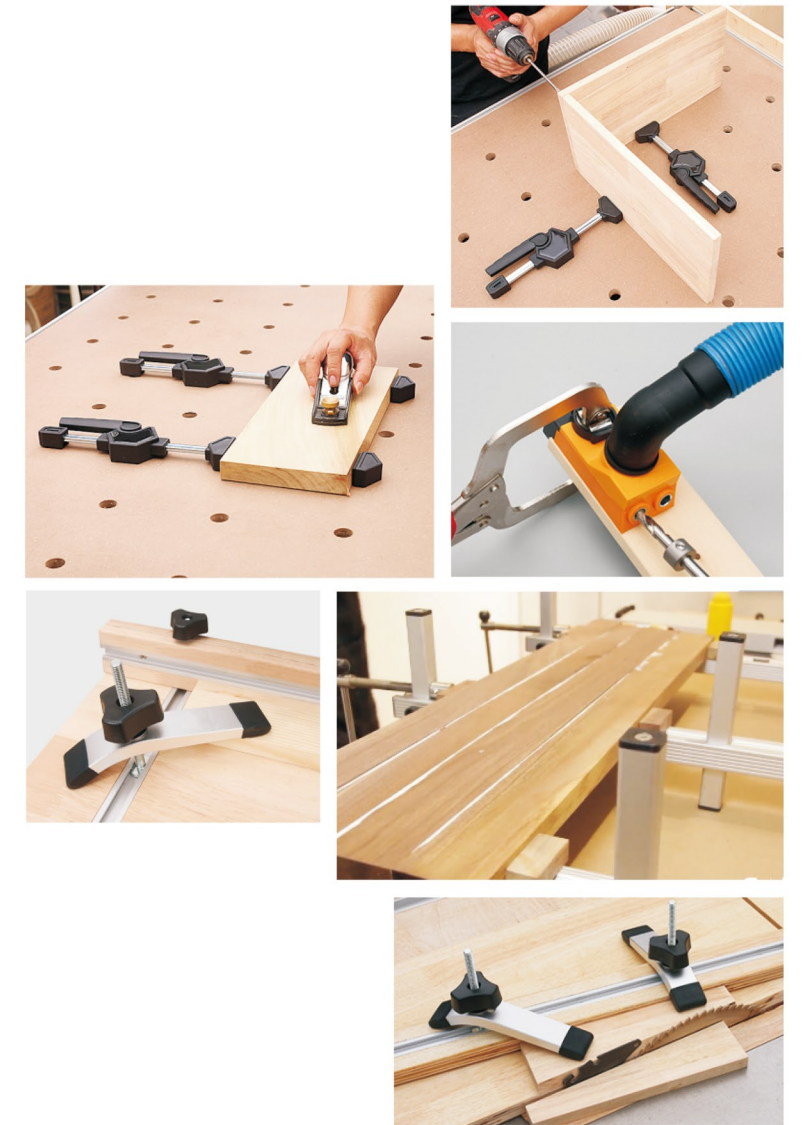


MG86969

拼版夹



MG86970



夹具系列，可以有力固定板材，无论是刨、锯、钻、磨均可以安心操作，可以充分保证板材夹持平整不松动，板材可横可竖亦可组合，操作更方便灵活

The fixture series, can be strong fixed plate, whether planing, sawing, drilling, grinding can be safe to operate, can fully ensure that the plate clamping flat not loose, plate can be horizontal vertical can also be combined, more convenient and flexible operation

安全羽毛板相关工具

M 6把手



MG86966



使用此连接件，可方便将对应工具如羽毛板固定在滑槽内，使用对应的螺丝，可灵活应用于不同的滑槽如：通用滑槽，T小槽或其他合适滑槽

Using the connecting piece, the corresponding tools such as the feather plate can be conveniently fixed in the chute, and the corresponding screws can be flexibly applied to different chute such as the universal chute, the t-slot or other suitable chute

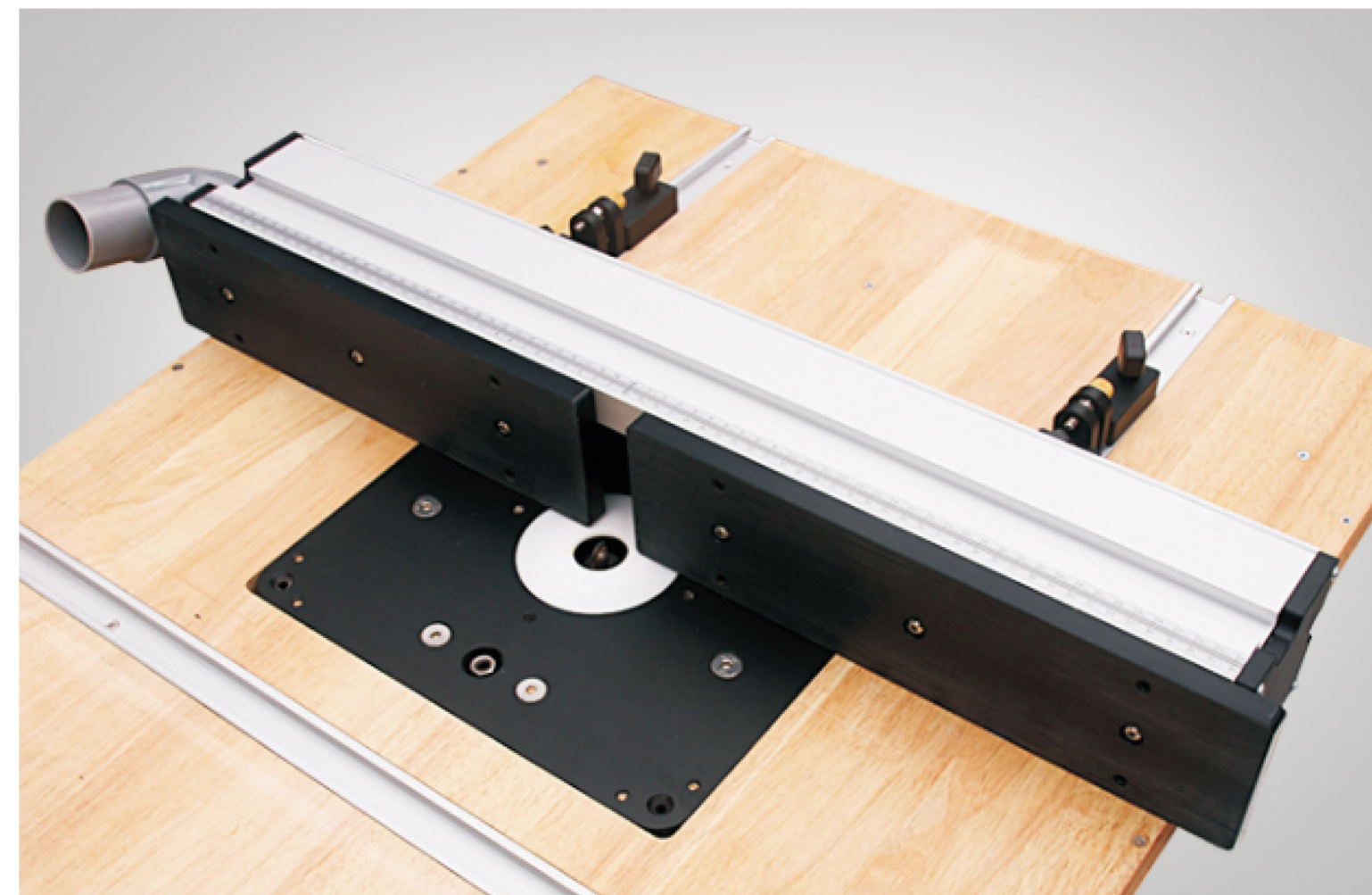


操作台靠山
Console support

DIY您的工作台

雕刻机，电圆锯，线锯，倒装，正装，各种DIY
您所需的工作台，迈思勃尔为您提供优质服务

It is specially used for punching plate splicing, which makes plate splicing more convenient and fast.



升降倒装雕刻 倒装板



MG86971



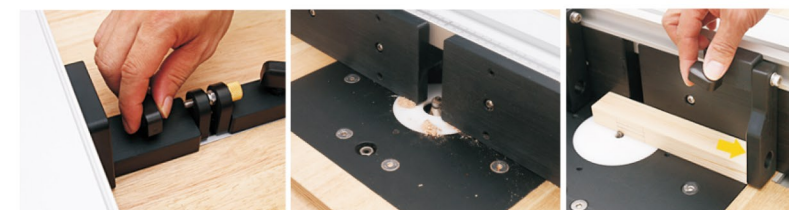
实现雕刻机的倒置安装，让操作更直观，多种规格变径圈，可对应多种雕刻机

Realize the inverted installation of engraving machine, so that the operation is more intuitive, a variety of specifications diameter ring, can correspond to a variety of engraving machine

倒装雕刻机 小靠山



MG86972



可吸尘，可多重调节，可增加限位，令雕刻机操作更方便，更精准

Can Vacuum, can be multiple adjustment, can increase the limit, so that engraving machine operation more convenient, more accurate

靠山 相关工具

推把



MG86976



推把+加强款 靠山



推把+简款靠山



推把+开榫 靠山

推把+简款靠山/加强款靠山：适用台锯/倒装雕刻机对木材进行各种操作
推把+开榫靠山：适用倒装雕刻机对木材进行开榫操作

Push handle simple type backer/strengthen type backer: suitable for table saw/flip engraving machine to carry out various operations on the wood
push handle tenon backer: suitable for flip engraving machine to open tenon operation on the wood

加强款靠山



MG86973

简款靠山



MG86974

开榫 靠山

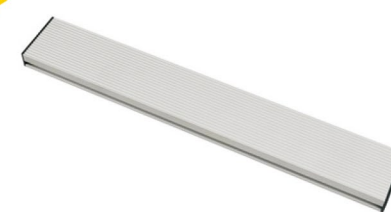


MG86975

加强款/简款靠山可搭配倒装电圆锯和倒装雕刻机，解决操作中定位，板材依靠问题
开榫靠山搭配倒装雕刻机，对板材进行开榫操作，精准定位，方便简易

Reinforced/simple backing can be equipped with flip circular saw and flip engraving machine, to solve the problem of positioning, plate with flip engraving machine, dovetail plate operation, accurate positioning, convenient and simple

靠山型材



MG86977

优质铝合金制作
45-60-80-100-122cm多规格可选

High Quality Aluminum Alloy 45-60-80-100-122cm multi-size optional

小靠山支架



MG86978

优质电木制作，可对小靠山多重调节

High-quality bakelite production, can be small backer multiple adjustment

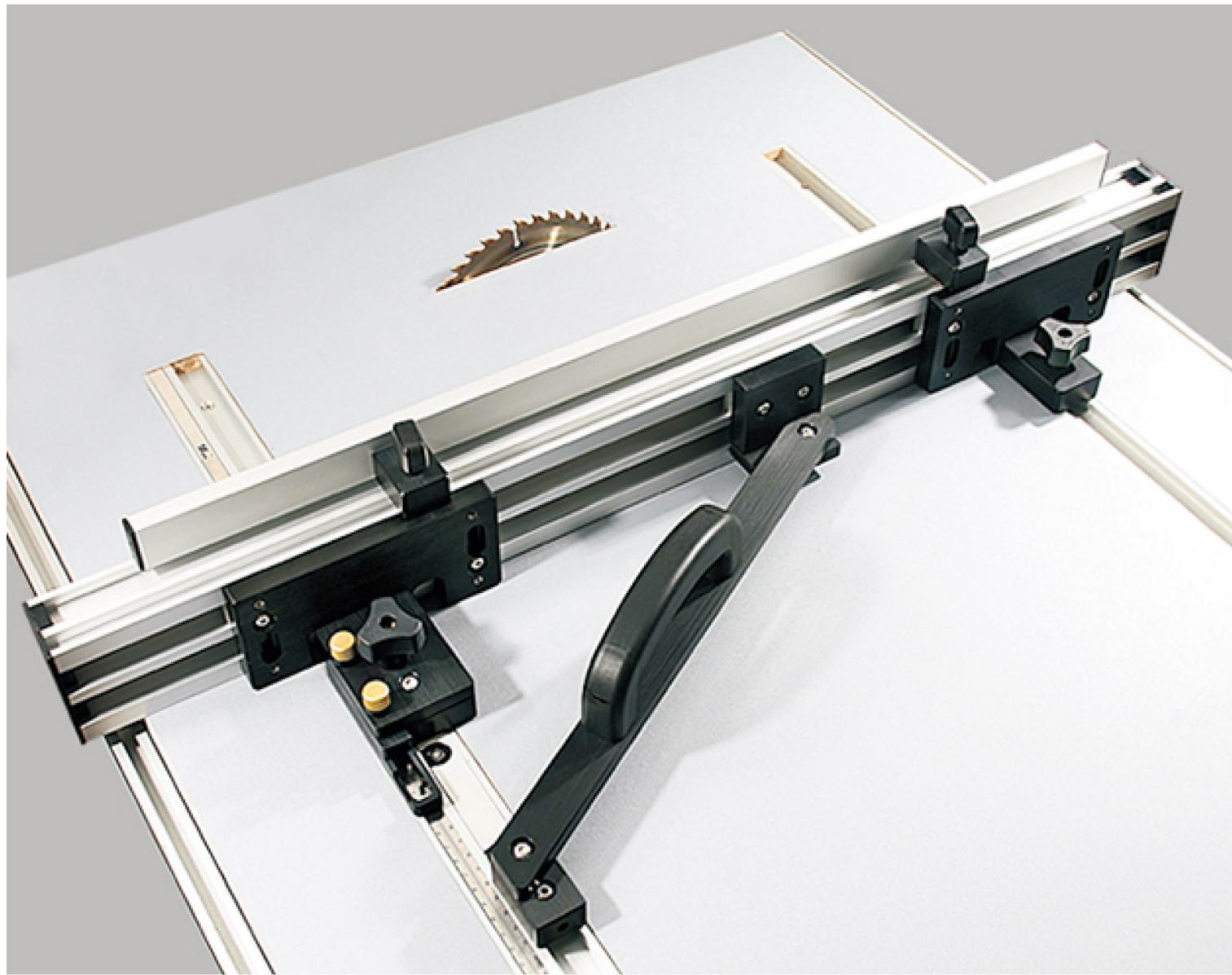
推把滑条



MG86979

优质铝合金制作，通用推把专用
30-45-65-88cm多规格可选

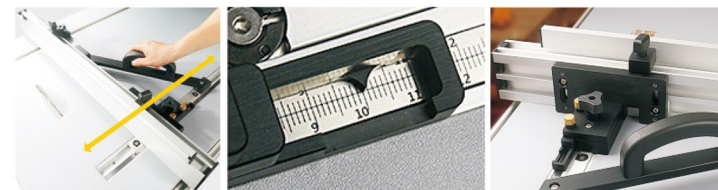
High-quality aluminum alloy production, universal push the special 30-45-65-88cm multi-specifications optional



倒装电圆锯靠山



MG86980

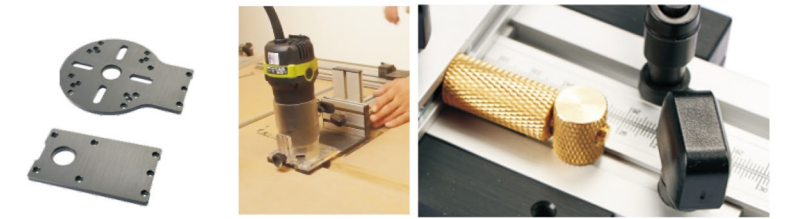


搭配倒装电圆锯操作台，解决操作中定位，板材依靠问题，让操作更便利，更精准，更安全

With inverted electric circular saw operating table, to solve the problem of positioning, plate, so that the operation is more convenient, more accurate, more safe

正装雕刻机导轨

MG86981

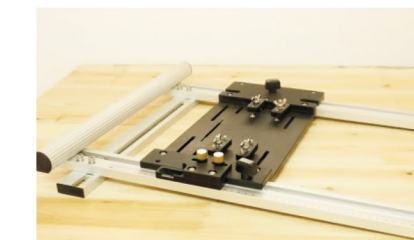
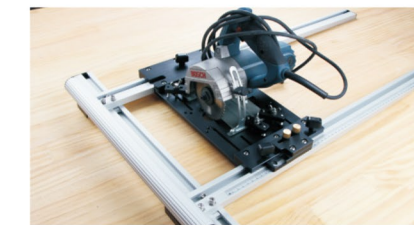


搭配雕刻机，让操作更便利，更精准，更安全。多种底板可选，最大程度的满足各种操作需求

With engraving machine, the operation is more convenient, more accurate, more secure and a variety of base plate can be selected to meet the maximum operating requirements

云石机裁板器

MG86982

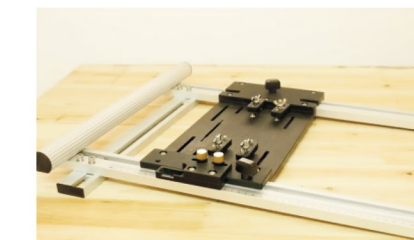
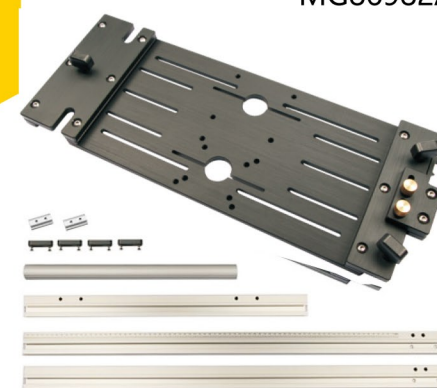


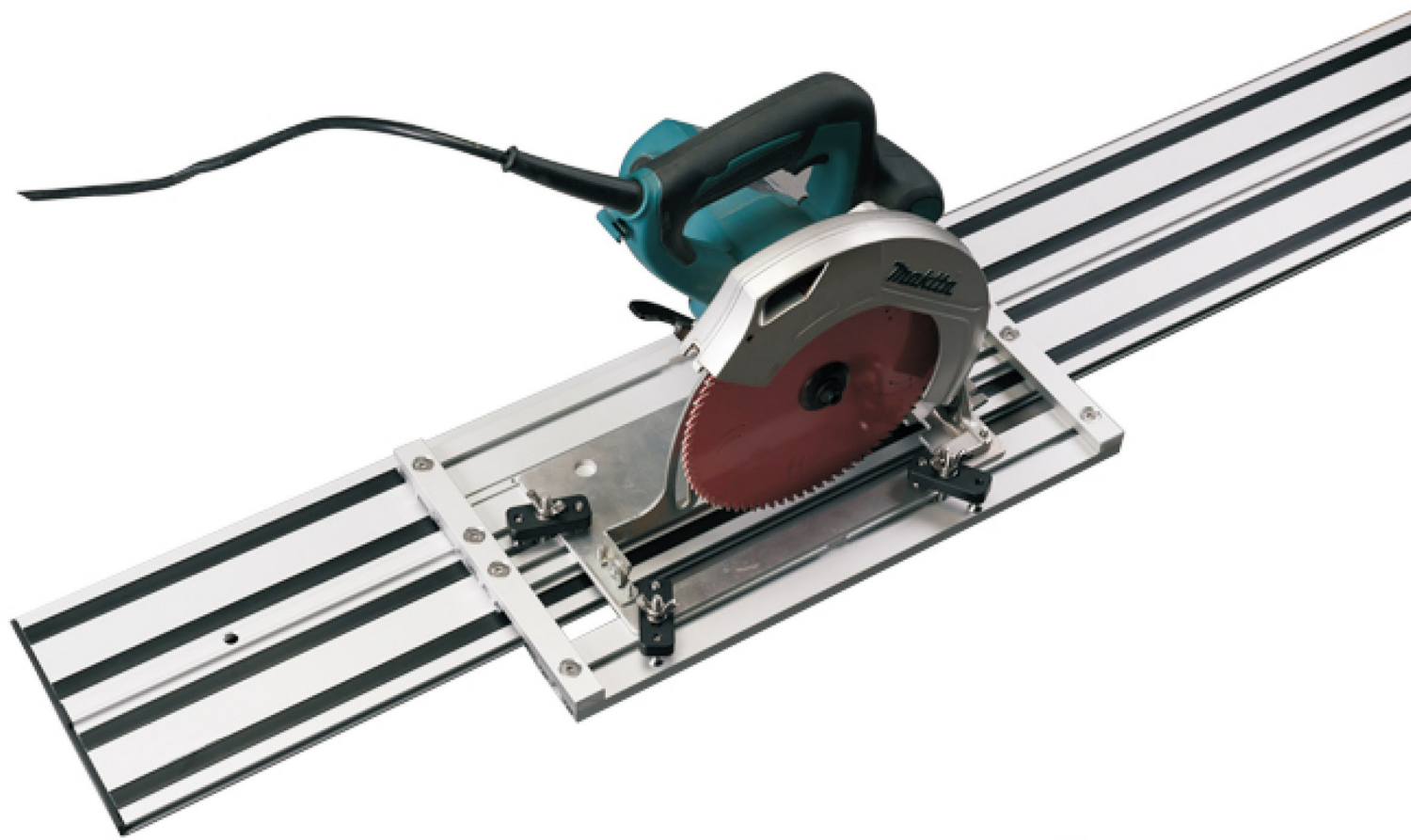
搭配电圆锯或云石机，方便对板材进行裁切操作，操作精准安全

With electric circular saw or marble machine, easy to cut the plate operation, accurate and convenient operation

电圆锯导轨 裁板器

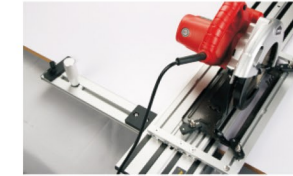
MG86982A





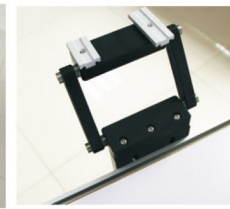
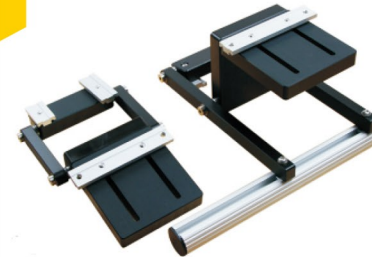
电圆锯导轨 相关工具

双层导轨 直角切割配件
MG86984



新款双层导轨专用，搭配电圆锯操作，对板材进行直角切割
The new double-deck guide rail special use, matches the electric circular saw operation, carries on the right angle cutting to the plate

电圆锯导轨 升降配件
MG86985

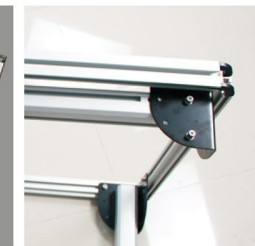


结合操作桌以及电圆锯导轨，可对电圆锯进行升降操作
Combined with the operating table and the guide rail of the circular saw, the circular saw can be raised and lowered

木工操作桌
MG86986



1220*738mm

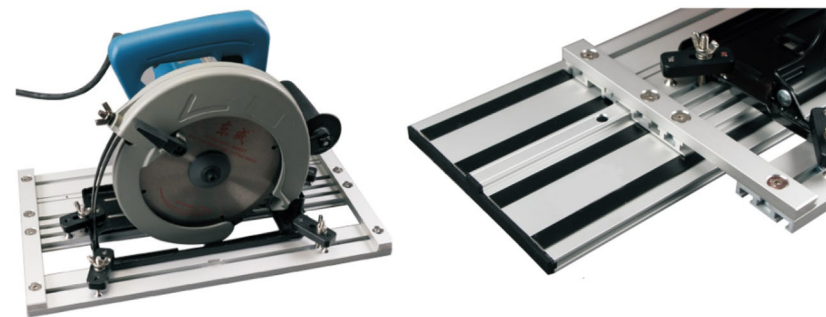


可用于DIY各种操作台，如倒装雕刻机/电圆锯，各种导轨及辅助工具
Can Be used for DIY various operating tables, such as flip engraving machine/electric circular saw, a variety of rails and auxiliary tools

新款 正装电圆锯导轨



MG86983



搭配电圆锯，解决操作中定位，板材依靠问题，可适用多种电圆锯
With electric circular saw, to solve the positioning in operation, plate depending on the problem can be applied to a variety of electric circular saw

双层导轨夹
MG86987



双层导轨包
MG86988



双层导轨板
MG86989





刻度滑槽



MG86990

刻度条滑槽

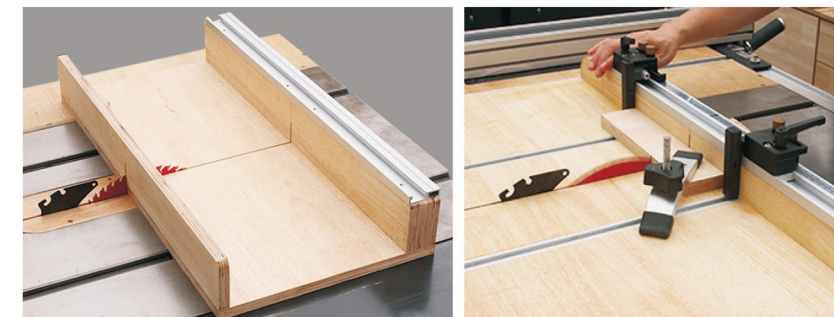


MG86991

无刻度滑槽



MG86992



优质铝合金制作
30-40-50-60-80-100-122cm多规格可选

搭配台锯，倒装电圆锯/雕刻机推台使用，方便操作更灵活

With table saw, upside-down electric circular saw/engraving machine push table to use, easy to operate more flexible

滑槽 相关工具

滑槽限位



MG86993

加长滑槽限位



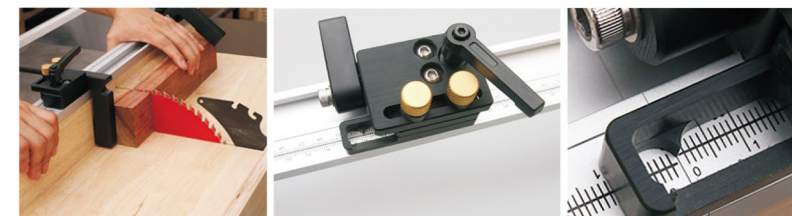
MG86994

不锈钢刻度尺

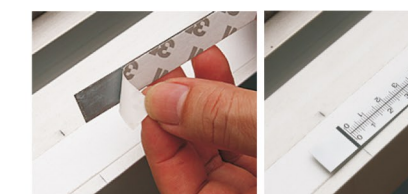


MG86995

制作板材时运用限位，可对所制板材的位置或长度作出限定，令制作更加精准
The use of limit when making plate, can be made to limit the position or length of the plate



DIY操作台时，可粘贴在靠山或滑槽，方便操作中测量长度
Diy Console, can be pasted in the back or chute, easy to measure the length of the operation



MAXPOWER

滑槽
Sliding
Chute

更顺滑 更灵活

各种DIY工作台，离不开各类滑槽，
滑槽材质优良，做工精细，工作台优选

It is specially used for punching plate splicing, which makes plate splicing more convenient and fast.



通用滑槽

MG86997

优质铝合金制作
30-40--50-60-80-100-122cm多规格可选

适用各种台锯/台钻/带锯/DIY操作台的滑槽铺设。搭配相对应滑块，可连接压板，羽毛板等工具

Suitable for all kinds of bench saw/bench drill/band saw/DIY operating table chute laying. The utility model can be connected with a pressing plate, a feather plate and other tools by matching corresponding sliders



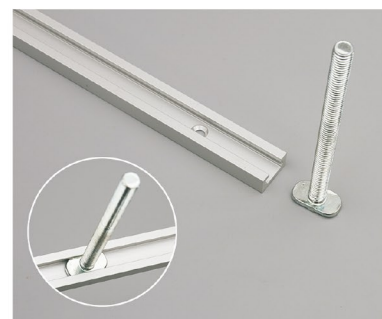
T小槽

MG86996

优质铝合金制作
30-40--50-60-80-100-122cm多规格可选

适用各种台锯/台钻/带锯/DIY操作台的滑槽铺设。搭配专用T螺丝，可连接压板，羽毛板等工具

Suitable for all kinds of bench saw/bench drill/band saw/DIY operating table chute laying. With special T screw, it can connect pressing board, feather board and other tools



滑槽 相关工具



T滑块

MG86998

优质铝合金制作，适用通用滑槽铺设，



十字滑槽

MG86999

优质铝合金制作，适用通用滑槽铺设

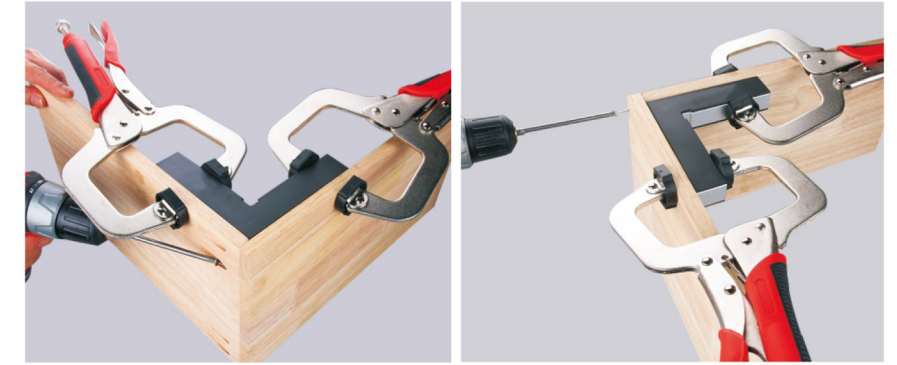




直角定位尺



MG87000

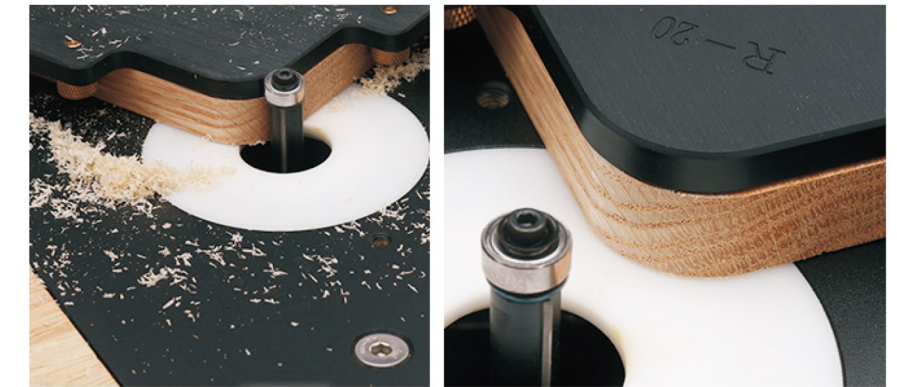


专门用作板材垂直拼接时的定位操作，精准90° 的定位，是拼接板材好帮手
It is specially used for the positioning operation when the plate is vertically spliced. The precise positioning of 90° makes it a good helper for splicing the plate

R角模板



MG87001

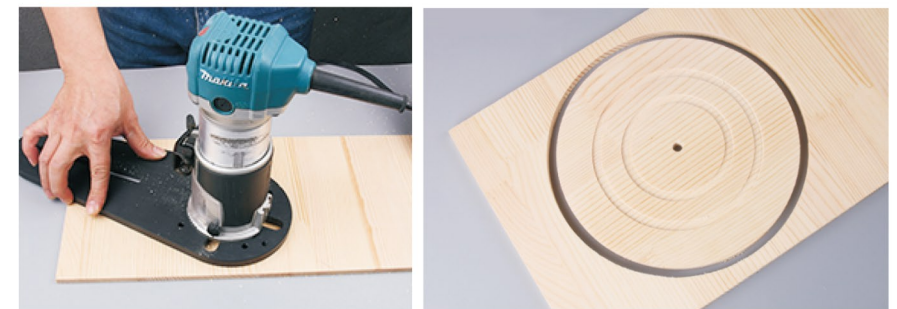


专门用作板材制作圆角，标准又光滑的制作效果，是处理板材尖角的好帮手
It is specially used for making round corners, Standard and smooth effect. It is a good helper for dealing with sharp corners of plates

铣圆辅具



MG87002



搭配修边机，轻松完成板材中制作圆环，圆孔操作，成品边沿整齐美观且可多尺寸调节，木工工作中的好帮手

With trimming machine, easily complete the plate in the production of rings, round Hole Operation, finished edge NEAT and beautiful and can adjust the size of a good helper in woodworking

MAXPOWER

定位模具

Positioning

标准化制作

高度，长度，平行度，直角，弧角，圆形，榫卯凹凸位置，让定位更方便精准

It is specially used for punching plate splicing, which makes plate splicing more convenient and fast.

开榫卡规



MG87003



专门用作榫卯对接口的精准把控，使用方便，多个刻度可选，满足大部分板材榫卯对接的需求

Specifically used for precise control of mortise and tenon joints, easy to use, multiple calibration optional, to meet the needs of most board mortise and tenon joints

不锈钢划线尺



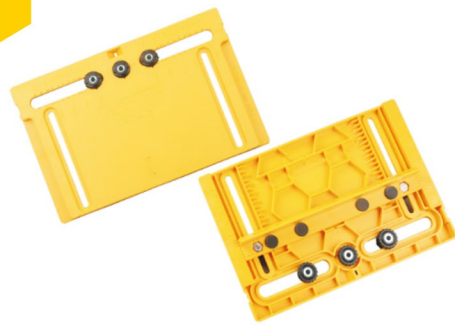
MG87006



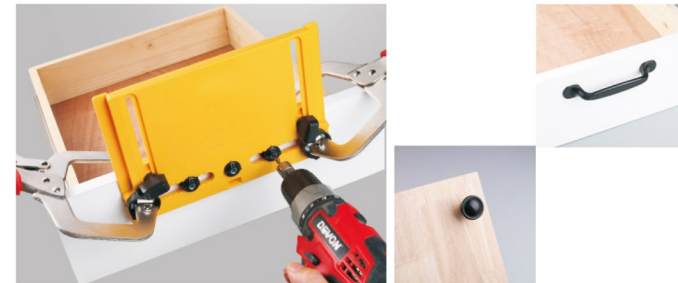
专门用于木工榫卯的定位划线作用，让操作更便利，更精准
横线，竖线，长线，短线，平行，直角线，让划线得心应手

The utility model is specially used for positioning and drawing the mortise and tenon for woodworking, making the operation more convenient and precise
horizontal, vertical, long, short, parallel and right angle lines, so that the drawing can be done at will

拉手定位器



MG87004



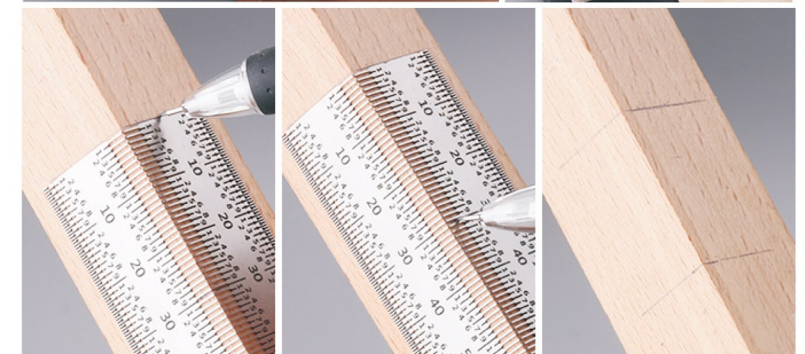
在安装拉手打孔的操作中，解决孔位不易对准的难题，且可以适应不同规格的拉手对应打孔，操作简单，对位准确，木工工作中的好帮手

In the operation of drilling, the problem that the hole position is not easy to align can be solved, and can adapt to the corresponding drilling of different specifications of the handle, the operation is simple, accurate alignment, woodworking good helper

不锈钢直角过线尺



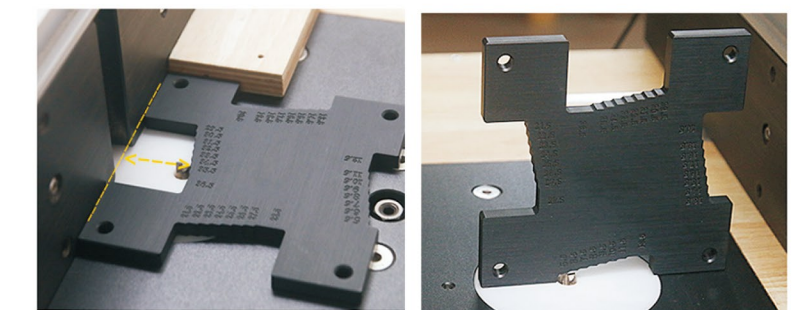
MG87007



测高规



MG87008



适用台锯，带锯，倒装雕刻机，铣床及其他需测量高度机器

Suitable for table saw, band saw, flip engraving machine, milling machine and other machines need to measure height

抽屉安装辅助件



MG87005



可以解决轨道两侧打孔高低不一的定位问题，快速平整安装抽屉轨道

The utility model can solve the problem that the two sides of the track are punched at different heights, and the drawer track is quickly leveled and installed

燕尾榫辅助器



MG87009

拉花锯



MG87011

旋转压板



MG87012

燕尾榫辅助器



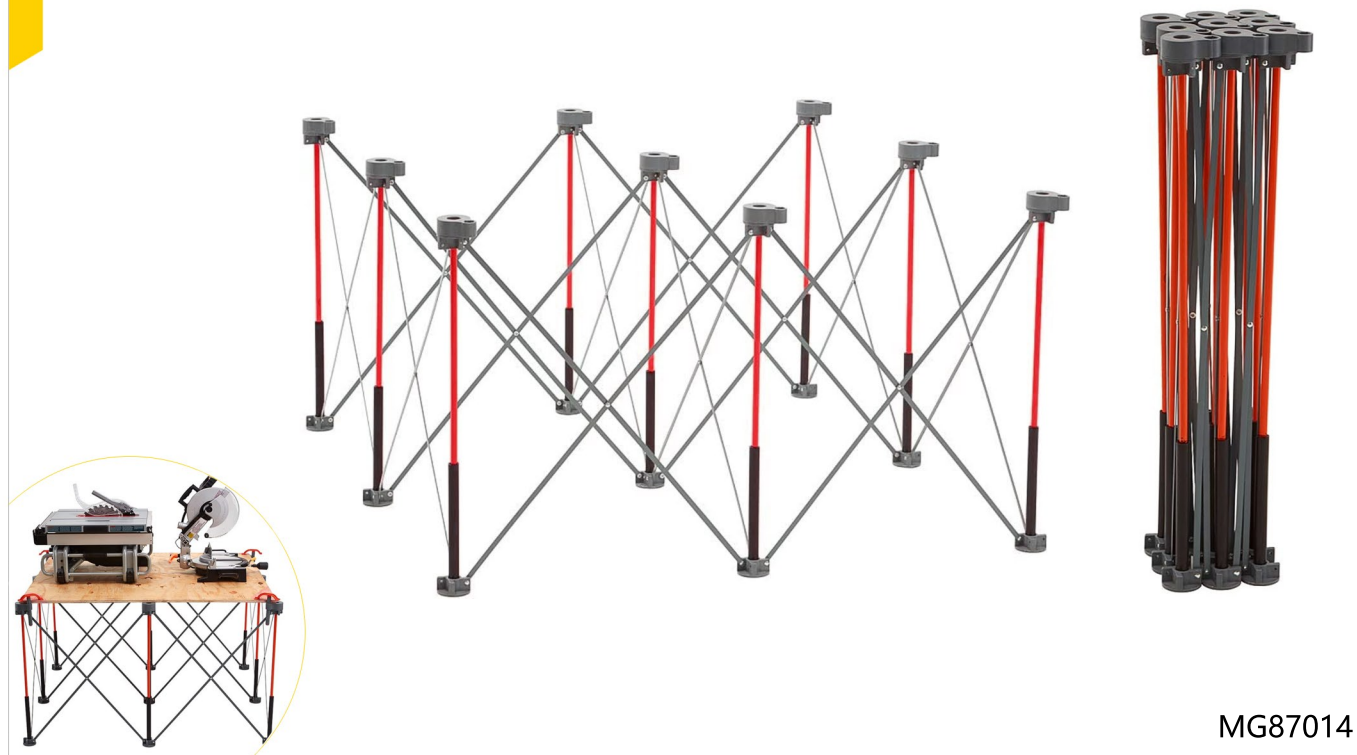
MG87010

锯马



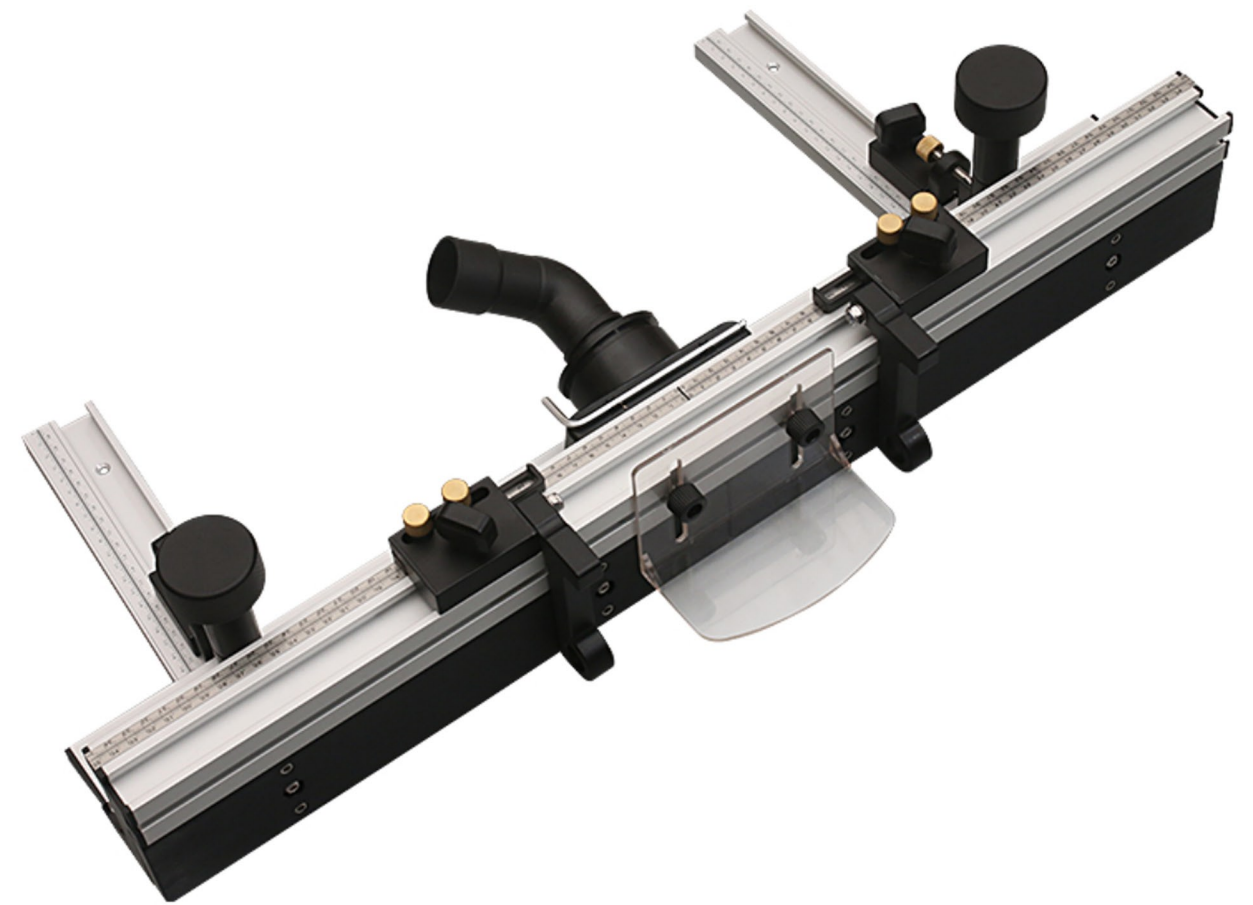
MG87013

蜘蛛腿支撑架



MG87014

倒装雕刻机靠山



钻孔定位器

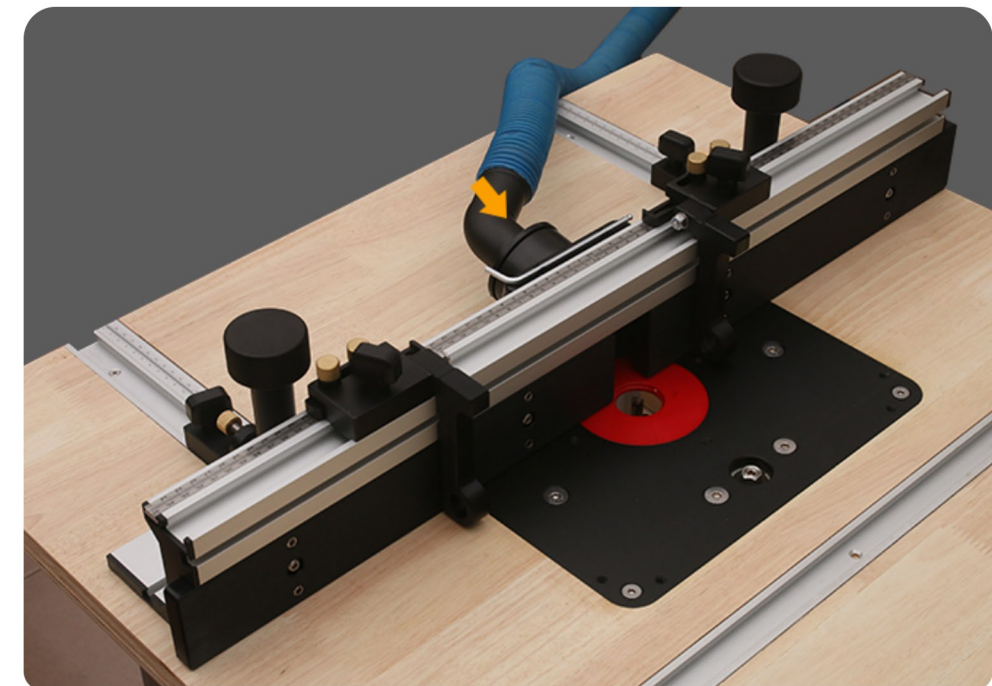


MG87015

迷你手工刨



MG87016



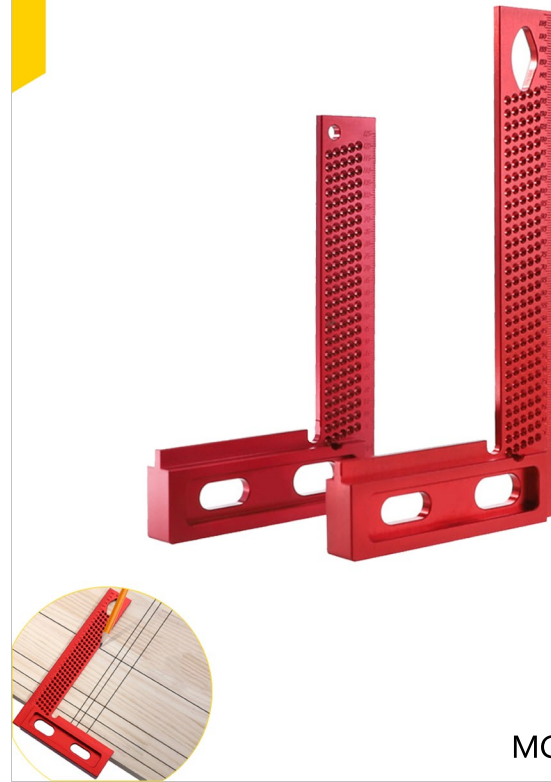
MG87017

45度刻度滑槽



MG87018

直角洞洞尺



MG87019

木工三边夹



MG87022

圆口大力钳



MG87023

木工快速F夹



MG87020

桌上型大力钳



MG87021

C型大力钳



MG87024

木工F夹



MG87025

棘轮F夹



MG87026

塑料弹簧夹



MG87027

木工带夹



MG87030

锯缝调节器



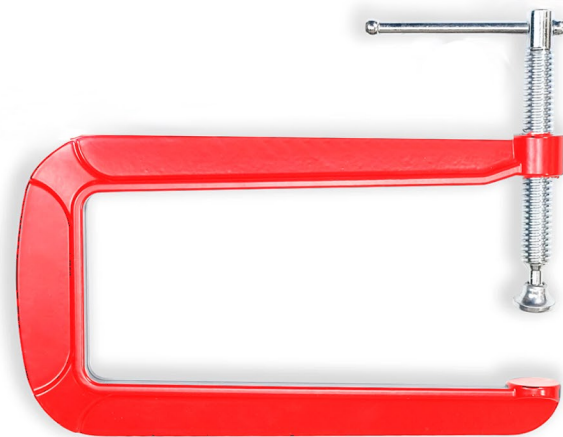
MG87031

木工C型夹



MG87028

木工深喉夹



MG87029

木工直角夹



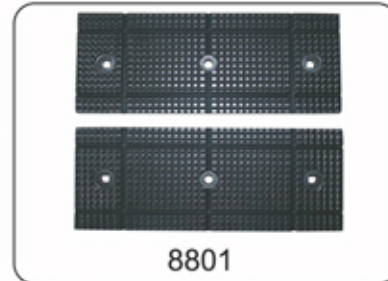
MG87032

倒装桌



MG87033

便携式夹具工作台



Height of table(mm)	840
Max. clamping length(mm)	950
Max. holding force(kgs)	1000
Max. holding weight(kgs)	300
N.W./G.W.(kgs)	21/23
Measurement(mm)	900x400x450
Units/20"(pcs)	140



MG87034

便携式夹具三脚架



Operation height (mm)	645-955
Operation clamping thickness(mm)	30-50
Max. holding weight(kgs)	220
N.W./G.W.(kgs)	5.5/6
Measurement(mm)	630x200x185
Units/20" (pcs)	1188



MG87035

便携式夹具工作台



Height of table(mm)	795
Max. clamping length(mm)	950
Max. holding force(kgs)	1000
Max. holding weight(kgs)	200
N.W./G.W.(kgs)	14/16.3
Measurement(mm)	800x320x350
Units/20"(pcs)	320

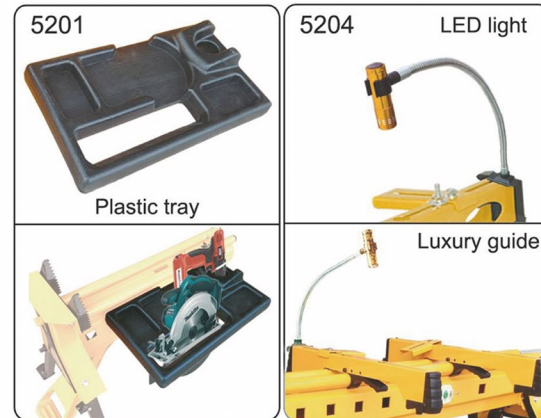


MG87036

便携式夹具工作台



Height of table(mm)	820
Operation Clamping length(mm)	1000
Operation length(mm)	1200-2150
Operation height of roller(mm)	880-990
Max. holding force(kgs)	1000
Max. holding weight(kgs)	200
N.W./G.W. (kgs)	25/27
Measurement(mm)	1230×315×345
Units/20" (pcs)	202



MG87037

石膏板起重支撑架



Max height(mm)	3400
Min height(mm)	1420
Plate size(mm)	1.22
Load capacity(kgs)	68
N.W./G.W. (kgs)	39/42
Machine dimensions(mm)	1300x500x170
Units 20"(pcs)	250

MG87039

便携式夹具工作台



Height of table(mm)	770
Operation Clamping length(mm)	870
Operation length(mm)	1230-2100
Operation height of roller(mm)	760-970
Max. holding force(kgs)	1000
Max. holding weight(kgs)	200
N.W./G.W. (kgs)	27/29
Measurement(mm)	1270×300×350
Units/20" (pcs)	202



MG87038

石膏板起重支撑架



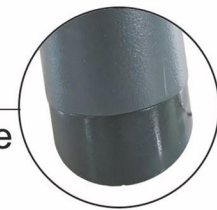
Stand Base Size(mm)	1400x1400
Distance Between Base And Floor(mm)	380
Min.Operation Height(mm)	1700
Max.Operation Height(mm)	4000
Off The Ground When Tilt 30 degree(mm)	1100
Extention Length(mm)	1050-2800
Wheel Size:(mm)	100
Max.Holding Weight(kgs)	80
N.W./G.W.(kgs)	40/43
Packing Size(mm)	1500x500x180

MG87040

斜切锯支撑座



Stability with full interface



Product size(mm)	1250x700x(910-1040)	1350x700x(910-1040)	1450x700x(910-1040)	1600x700x(915-1015)
Operation height(mm)	890	890	890	890
Operation length(mm)	1160-2760	1260-2896	1360-3100	1510-3310
Max. holding weight(kg)	150	150	150	150
N.W./G.W.(kgs)	24/23	24.4/26	25/26.5	26/27.5
Measurement(mm)	1156x425x265	1256x425x265	1356x425x265	1506x425x265
Units/20"(pcs)	224	210	192	170

MG87041

斜切锯支撑座



Height of table(mm)	725-820
Operation length(mm)	880-1950
Operation height of roller(mm)	770-890
Max. holding weight(kgs)	150
N.W./G.W.(kgs)	22/24
Measurement(mm)	935x310x275
Units/20"(pcs)	336

MG87042

斜切锯支撑座



Operation height(mm)	885-960
Operation length(mm)	1460-3160
Max. holding weight(kgs)	350
N.W./G.W.(kgs)	28/32
Measurement(mm)	1435x585x260
Units/20"(pcs)	128
Units/40"H(pcs)	316

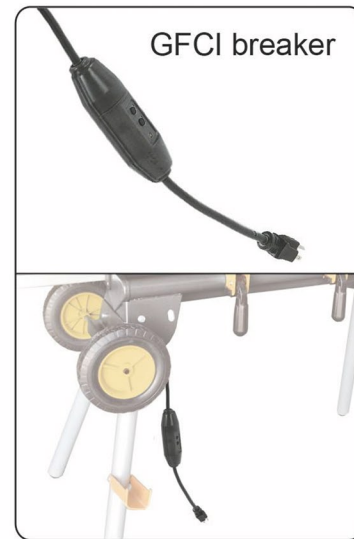
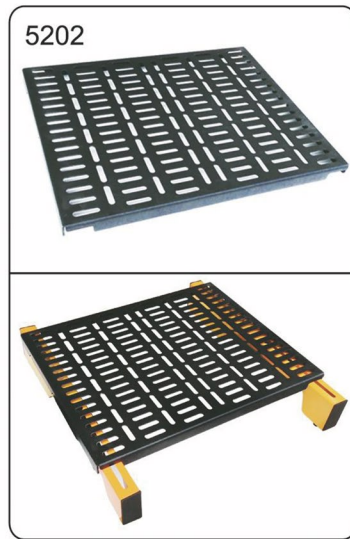
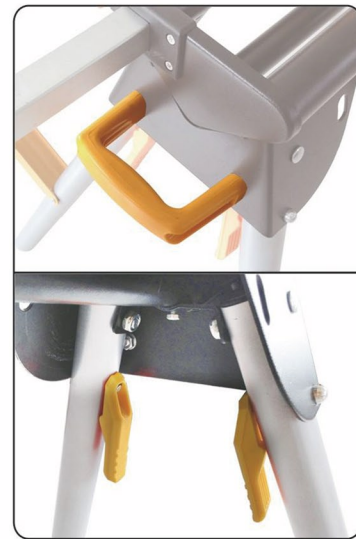


MG87043

斜切锯支撑座



Product size(mm)	(1565-3100)x 700x(870-1000)
Operation height(mm)	870-1000
Max. holding weight(kgs)	226
N.W./G.W.(kgs)	26.2/29
Measurement(mm)	1356x425x265
Units/20"(pcs)	246
Units/40"(pcs)	552



MG87044

可移动基底



Max. holding weight(lbs)	500
N.W./G.W.(kgs)	7.83/8.83
Max. square(mm)	900×900
Max. rectangle(mm)	500×1300
Min. size(mm)	300×300
Measurement(mm)	520×215×115
Units/20"(pcs)	1870

MG87045

可移动基底



Max. holding weight(lbs)	700
N.W./G.W.(kgs)	11.93/13
Max. square(mm)	960×960
Max. rectangle(mm)	550×1370
Min. size(mm)	355×355
Measurement(mm)	490×215×115
Units/20"(pcs)	1580

MG87046

可移动基底



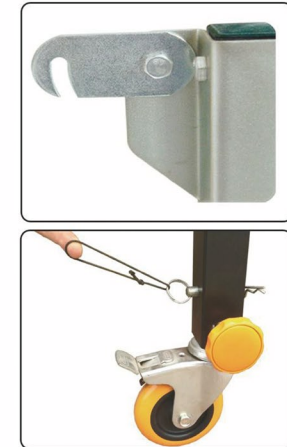
Optional Accessory



Max. holding weight(lbs)	1300
N.W./G.W.(kgs)	18.37/19.5
Max. rectangle(mm)	720×850
Min. size(mm)	460×620
Measurement(mm)	650×380×115
Units/20"(pcs)	850

MG87047

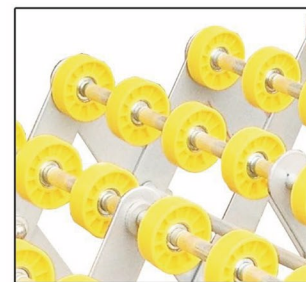
移动传送架



Diameter of roller(mm)	50
Operation length(mm)	820-2090
Operation height(mm)	670-940
Max. holding weight(kgs)	200
N.W./G.W.(kgs)	48/50
Measurement(mm)	850×620×360
Units/20"(pcs)	140

MG87049

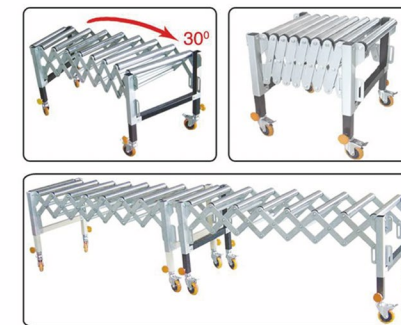
移动传送架



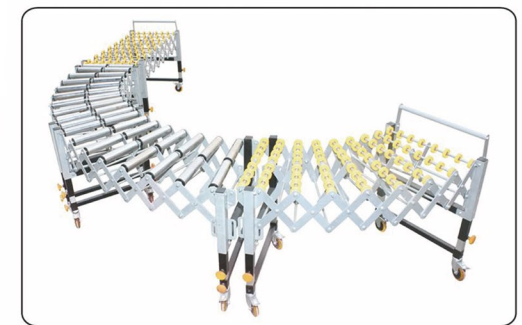
Diameter of roller(mm)	50
Operation length(mm)	450-1300
Operation height(mm)	670-920
Max. holding weight(kgs)	130
N.W./G.W.(kgs)	32.3/34.3
Measurement(mm)	630×600×380
Units/20"(pcs)	198

MG87048

移动传送架

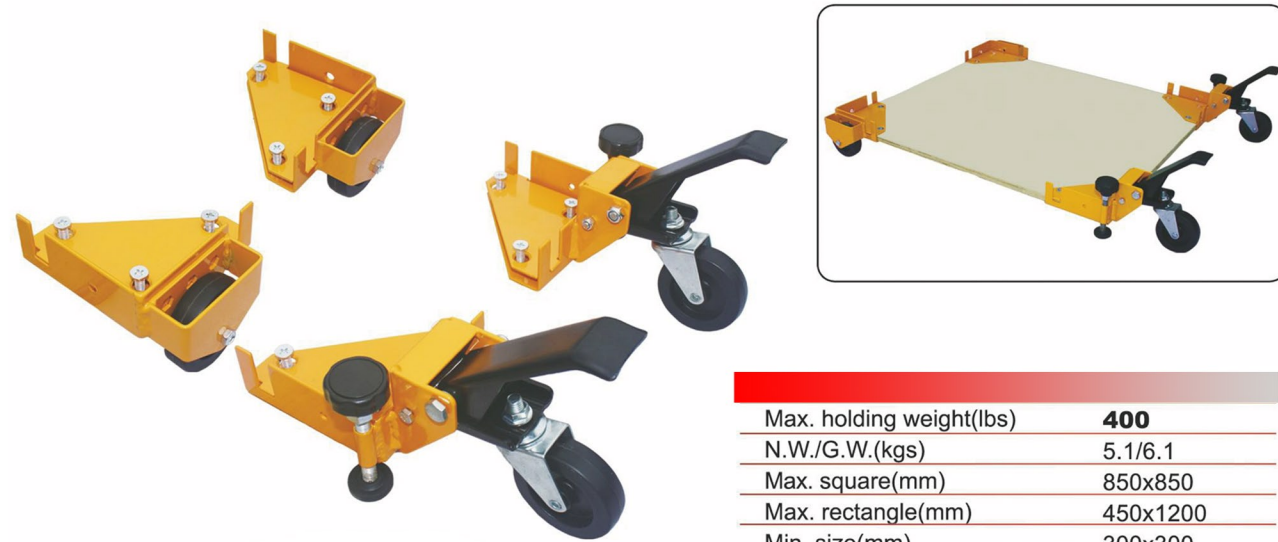


Diameter of roller(mm)	50
Operation length(mm)	450-1300
Operation height(mm)	670-920
Max. holding weight(kgs)	130
N.W./G.W.(kgs)	38/40
Measurement(mm)	630×600×380
Units/20"(pcs)	198



MG87050

移动撑脚



Max. holding weight(lbs)	400
N.W./G.W.(kgs)	5.1/6.1
Max. square(mm)	850x850
Max. rectangle(mm)	450x1200
Min. size(mm)	300x300
Measurement(mm)	480x170x100

MG87051

移动传送架



Diameter of roller(mm)	50
Diameter of ball(mm)	16
Operation height(mm)	730-1050
Max.holding weight(kgs)	80
N.W./G.W.(kgs)	5.93/6.5
Measurement(mm)	550x210x160
Units/20"(pcs)	1596

MG87053

打磨机架



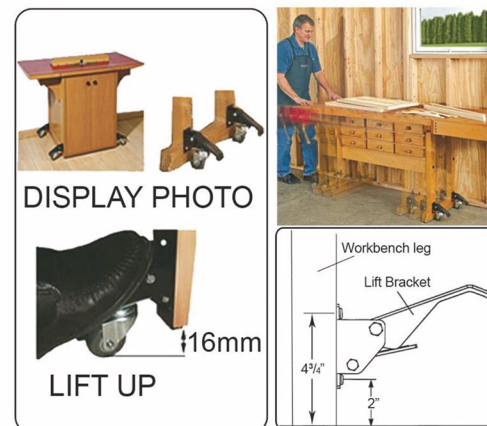
Height of table(mm)	805
Max.holding weight(kgs)	100
N.W./G.W.(kgs)	12.47/14
Measurement(mm)	800x470x90
Units/20"(pcs)	648

MG87054

移动撑脚



Diameter of caster(mm)	60
Max. holding weight (kgs)	200
Lift height Max. (mm)	16
N.W./G.W.(kgs)	3.9/4.1
Inner carton/set(mm)	260x130x115
Outer carton/12er(mm)	535x405x245
Units/20'(pcs)	6000



MG87052

传送架



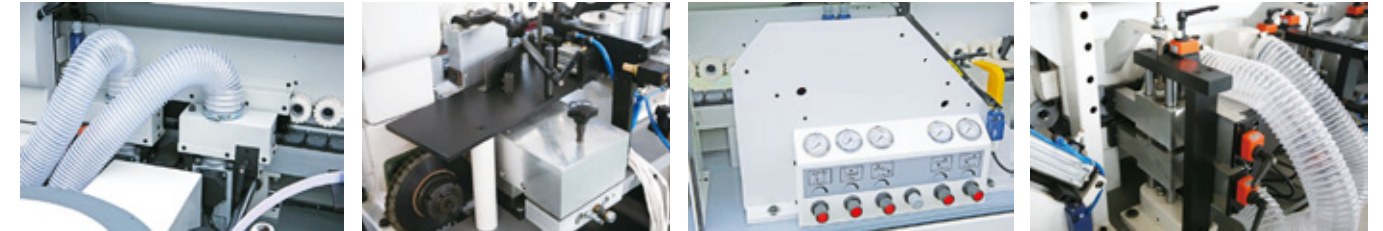
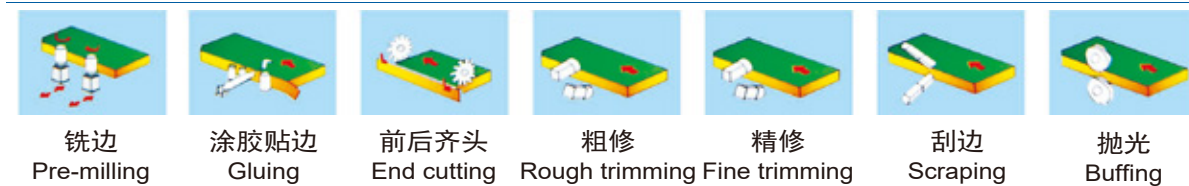
Diameter of roller(mm)	50
Table size(mm)	3000x520
Operation height(mm)	890-960
Max. holding weight(kgs)	400
N.W./G.W.(kgs)	69/72
Measurement(mm)	3040x540x130/725x530x230
Units/20"(pcs)	76

MG87055

MGB106 全自动封边机 Auto edge banding machine



功能示意图:



预铣装置采用双铣刀对裁板锯加工后所引起的波纹痕迹,进行再次修饰,以达到更好的封边效果。
Premilling device with double milling cutters to get rid of saw lines of panel edge,the retrimming work is to get a better edging finish.

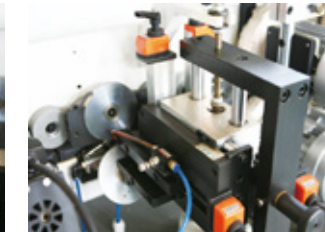
涂胶封边部分采用下置式热熔胶锅,合理的送胶结构,保证了送胶方便,涂胶均匀,封边牢固。
Bottom placing glue pot,with reasonable glue coating structure, which ensure the evenly gluing and tighten edging.

齐头部分用来修正板材前后端多余的封边材料,采用变频高速电机和靠模跟踪结构,保证切断面平滑整齐。
End-cutting section with high speed motors and profiling backups to shave the both ends' edge tap.

粗修部分用于修去加工板材封边带上下部分多余的封边材料,采用变频高速电机和靠模跟踪结构,保证修便板材上下部分的平滑整齐。
Rough trimming device is using inverter high speed motor to shave both top and bottom panel tapped edges, which ensures the neat and flatness of the edging finish.



精修部分采用变频高速电机和靠模跟踪结构,保证修边材料上下部分圆弧的平滑整齐,美观光洁。
Fine trimming section with inverter high speed motor and profiling backups, which to get the arc edge and fine finish.



刮边部分是为了修整由于修边非直线运动的切割方式而引起的波纹痕迹,使板材上下部分更加光滑整洁。
Scraping section is to get rid of trailing lines to make the top and bottom edge more smoothly and more neat.



抛光部分用于清理加工好的板材,并起到抛光作用。
Polishing part is to clean the finishing board,and reach the polishing function.

技术参数 /Technical Parameters

板料厚度 (仿形 / 预铣)	Panel thickness (Round-Trimming/PRE-Milling)	使用预铣: 10~47mm (Pre-milling) / 不使用预铣: 10-60 (No pre-milling)
板料宽度 (仿形 / 预铣)	Panel width (Round-Trimming/PRE-Milling)	min.60mm
板料长度 (仿形 / 预铣)	Panel length (Round-Trimming/PRE-Milling)	min.120mm(PVC)
封带宽度 (仿形 / 预铣)	Edging width (Round-Trimming/PRE-Milling)	15-65mm
封带厚度 (仿形 / 预铣)	Edging thickness (Round-Trimming/PRE-Milling)	0.4-15mm
进给速度 (仿形 / 预铣)	Feeding speed (Round-Trimming/PRE-Milling)	9-19m/min
输入电压 In-put voltage		380v
输入频率 In-put frequency		50Hz
输出频率 Out-put frequency		200Hz
总功率 Installed power		12.48kw
空气气压 Compressed air pressure		0.7Mpa
整机净重 Net weight		~ 2000kg
外形尺寸 Overall dimension		4930×850×1380mm

MGB106

气动元件 100% 由台湾 AIRTAC 提供。
配备的大刀和小刀消除了用户选料的局限性。
五道贴边滚压系统使工件粘和更牢固平整。
性能稳定的 19 米 / 分钟高速送料系统, 并可 9-19 米无级调速。
板料宽度最小 60mm。
实木封边条最大厚度可达 15mm, 最小厚度 0.4mm。
个性化的夹条系统, 在封边条厚度变更时操作更简单。
100% pneumatic components from Taiwan AIRTAC.

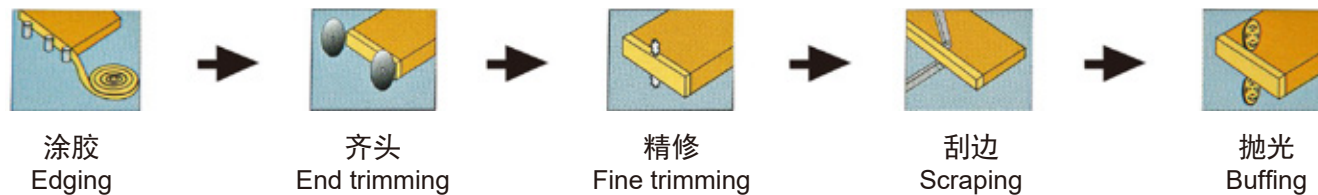
Equipped with double knives for different processing option.
With five backup roller system ensures the paste more tight and flatness.
Stable performance of 19 m / min high speed feeding system, and 9-19 meters stepless speed regulation.
Board width minimum 60mm.
For process solid wood strips,maximum thickness up to 15mm, minimum 0.4mm.
Personalised edge clamp system makes easy operation for change of different edge thickness.

MGB104 全自动直线封边机

Fully-automatic straight edge banding machine



功能示意图:



MGB104

本机适用于实木板、纤维板、刨花板等板材工件的直线封边，封边材料可用实木条、PVC、三聚氰氨、薄木皮等。

采用原装进口电机及进口优质电气元件。

产品系列化，客户选择多元化。高精度、高效率。

Adopt to the sealing of PVC, wood pland and veneer etc.

Using imported quality engines and electric components.

Serialized products, a wide range of selection by customers.

Hing precision and efficiency.



Bottom placing glue pot, with reasonable glue coating structure, which ensure the evenly gluing and tighten edging.



End-cutting section with high speed motors and profiling backups to shave the both ends' edge tap.

技术参数 / Technical Parameters

板料厚度 Panel thickness	10-60mm
板料宽度 Panel width	min.60mm
板料长度 Panel length	min.160mm
封带宽度 Edging width	10-65mm
封带厚度 Edging thickness	0.4-15mm
进给速度 Feeding speed	18m/min
变频 Inverter frequency	200Hz
总功率 Installed power	12/18kw
空气气压 Compressed air pressure	0.7Mpa
整机净重 Net weight	~ 1300kg
外形尺寸 Overall dimension	3860×750×1400mm



精修部分采用变频高速电机和靠模跟踪结构，保证修边材料上下部分圆弧的平滑整齐，美观光洁。

Fine trimming section with inverter high speed motor and profiling backups, which to get the arc edge and fine finish.



刮边部分是为了修整由于修边非直线运动的切割方式而引起的波纹痕迹，使板材上下部分更加光滑整洁。

Scraping section is to get rid of trailing lines to make the top and bottom edge more smoothly and more neat.



抛光部分用于清理加工好的板材，并起到抛光作用。

Polishing part is to clean the finishing board, and reach the polishing function.

MGB103 全自动直线封边机

Fully-automatic straight edge banding machine



功能示意图:



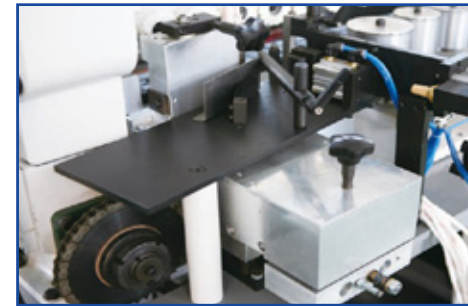
涂胶
Edging

齐头
End trimming

精修
Fine trimming

抛光
Buffing

MGB103



涂胶封边部分采用下置式热熔胶锅,合理的送胶结构,保证了送胶方便,涂胶均匀,封边牢固。
Bottom placing glue pot,with reasonable glue coating structure, which ensure the evenly gluing and tighten edging.



齐头部分用来修正板材前后端多余的封边材料,采用变频高速电机和靠模跟踪结构,保证切断面平滑整齐。
End-cutting section with high speed motors and profiling backups to shave the both ends' edge tap.



精修部分采用变频高速电机和靠模跟踪结构,保证修边材料上下部分圆弧的平滑整齐,美观光洁。
Fine trimming section with inverter high speed motor and profiling backups, which to get the arc edge and fine finish.



抛光部分用于清理加工好的板材,并起到抛光作用。

Polishing part is to clean the finishing board, and reach the polishing function.

技术参数 / Technical Parameters

板料长度 Panel length	min.120mm(PVC)
板料宽度 Panel width	min.60mm
板料厚度 Panel thickness	10-60mm
封带宽度 Edging width	10-65mm
封带厚度 Edging thickness	0.4-15mm
送给速度 Feeding speed	18m/min
输入电压 Input voltage	380V
输入频率 Input frequency	50Hz
输出频率 Output frequency	200Hz
总功率 Installed power	8.58kw
空气气压 Compressed air pressure	0.7Mpa
整机净重 Net weight	~ 1000kg
外形尺寸 Overall dimension	3180×750×1400mm

本机适用于实木板、纤维板、刨花板等板材工件的直线封边,封边材料可用实木条、PVC、三聚氰氨、薄木皮等。采用原装进口电机及进口优质电气元件。产品系列化,客户选择多元化。高精度、高效率。

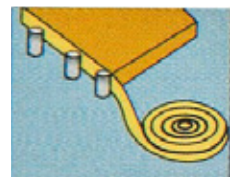
Adopt to the sealing of PVC, wood pland and veneer etc. Using imported quality engines and electric components. Serialized products,a wide range of selection by customers. Hing precision and efficiency.

MGB101半自动直线封边机

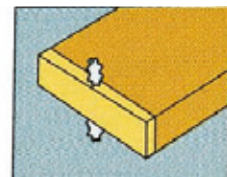
Semi-automatic straight edge banding machine



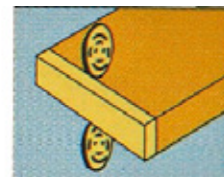
功能示意图:



涂胶
Edging

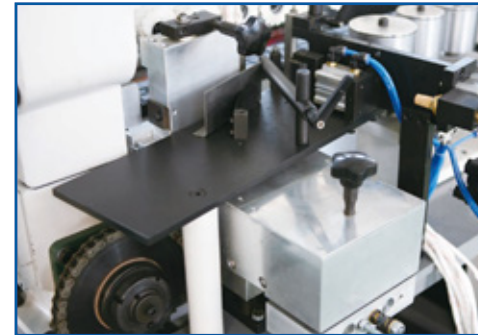


精修
Fine trimming



抛光
Buffing

MGB101



涂胶封边部分采用下置式热熔胶锅,合理的送胶结构,保证了送胶方便,涂胶均匀,封边牢固。
Bottom placing glue pot,with reasonable glue coating structure, which ensures the even gluing and tighting edging.



精修部分采用变频高速电机和靠模跟踪结构,保证修边材料上下部分圆弧的平滑整齐,美观光洁。
Fine trimming section with inverter high speed motor and profiling backups, which to get the edge arc and fine finish.



抛光部分用于清理加工好的板材,并起到抛光作用。

Polishing part is to clean the finishing board, and reach the polishing function.

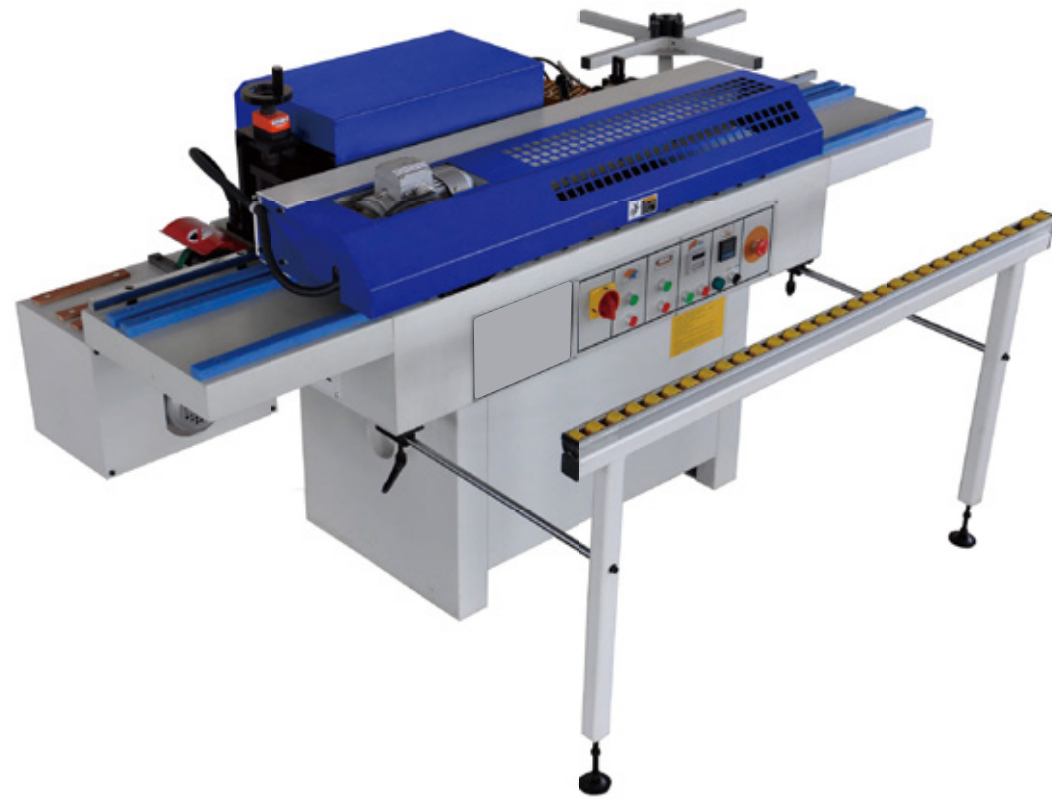
技术参数 / Technical Parameters

型号 Type	MGB-101
板材长度 Panel length	≥120mm
板材宽度 Panel width	≥60mm
板材厚度 Panel thickness	10-60mm
封边条厚度 Edging thickness	0.4-15mm
送料速度 Feeding speed	16m/min
输入电源 Input power	380V/50Hz
总功率 Total power	5.2kw
气源压力 Compressed air pressure	0.7Mpa
整机净重 Net weight	~ 700kg
外形尺寸 Dimension of machine	2500×750×1400mm

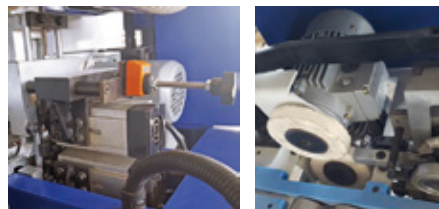
本机适用于实木板、纤维板、刨花板等板材工件的直线封边,封边材料可用实木条、PVC、三聚氰氨、薄木皮等。采用原装进口电机及进口优质电气元件。产品系列化,客户选择多元化。高精度、高效率。

Adopt to the sealing of PVC, wood panel and veneer etc. Using imported quality engines and electric components. Serialized products, a wide range of selection by customers. High precision and efficiency.

MGF115 半自动封边机 Semi-automatic Edge BandER



Optional



技术参数 /Technical Parameters

型号 ITEM/MODEL	MGF115		
板料长度 Panel length	Min. 100mm (PVC)	输入电压 In-put voltage	380V
板料宽度 Panel width	Min. 90mm	输入频率 In-put frequency	50Hz
板料厚度 Panel thickness	10-45mm	总功率 Total Power consumption	2.3kw
封带宽度 Edge width	12-48mm	空气气压 Required air pressure	0.7Mpa
封带厚度 Edge thickness	0.4-3mm	净重 Net weight	~ 350kg
进给速度 Feeding speed	6m/min	尺寸 Overall dimension (LxWxH)	2070x800x1130mm

MGF115B 半自动封边机 Semi-automatic Edge BandER



功能示意图:



Optional



技术参数 /Technical Parameters

型号 ITEM/MODEL	MGF115B		
板料长度 Panel length	Min. 100mm (PVC)	输入电压 In-put voltage	380V
板料宽度 Panel width	Min. 90mm	输入频率 In-put frequency	50Hz
板料厚度 Panel thickness	10-45mm	总功率 Total Power consumption	2.48kw
封带宽度 Edge width	12-48mm	空气气压 Required air pressure	0.7Mpa
封带厚度 Edge thickness	0.4-3mm	净重 Net weight	~ 350kg
进给速度 Feeding speed	6m/min	尺寸 Overall dimension (LxWxH)	2070x800x1130mm

MGF115Q 半自动封边机 Semi-automatic Edge BandER

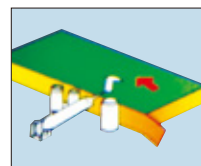


功能示意图:

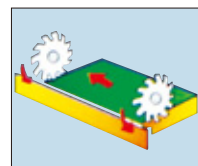
Optional



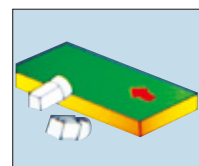
涂胶贴边 Gluing



前后齐头 End trimming



精修 Fine trimming



技术参数 /Technical Parameters

型号 ITEM/MODEL	MGF115Q	输入电压 In-put voltage	380V
板料长度 Panel length	Min. 100mm (PVC)	输入频率 In-put frequency	50Hz
板料宽度 Panel width	Min. 90mm	总功率 Total Power consumption	2.49kw
板料厚度 Panel thickness	10-45mm	空气气压 Required air pressure	0.7Mpa
封带宽度 Edge width	12-48mm	净重 Net weight	~ 380kg
封带厚度 Edge thickness	0.4-3mm	尺寸 Overall dimension (LxWxH)	2070x800x1130mm
进给速度 Feeding speed	6m/min		

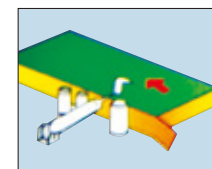
MGF115QB 半自动封边机 Semi-automatic Edge BandER



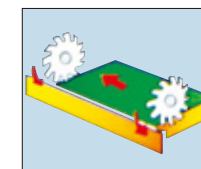
功能示意图:

Optional

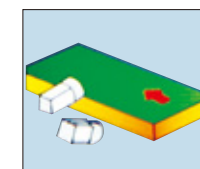
涂胶贴边 Gluing



前后齐头 End trimming



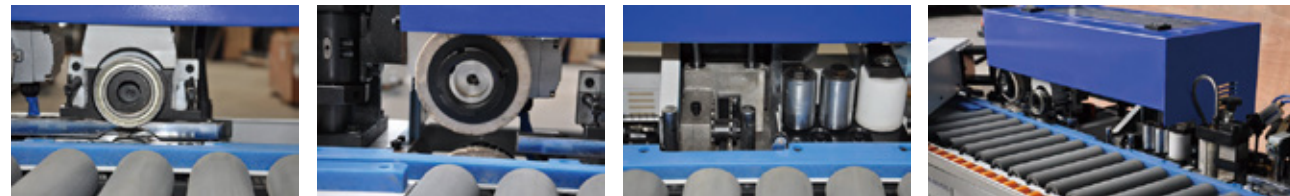
精修 Fine trimming



技术参数 /Technical Parameters

型号 ITEM/MODEL	MGF115QB	输入电压 In-put voltage	380V
板料长度 Panel length	Min. 100mm (PVC)	输入频率 In-put frequency	50Hz
板料宽度 Panel width	Min. 90mm	总功率 Total Power consumption	2.49kw
板料厚度 Panel thickness	10-45mm	空气气压 Required air pressure	0.7Mpa
封带宽度 Edge width	12-48mm	净重 Net weight	~ 395kg
封带厚度 Edge thickness	0.4-3mm	尺寸 Overall dimension (LxWxH)	2070x800x1130mm
进给速度 Feeding speed	6m/min		

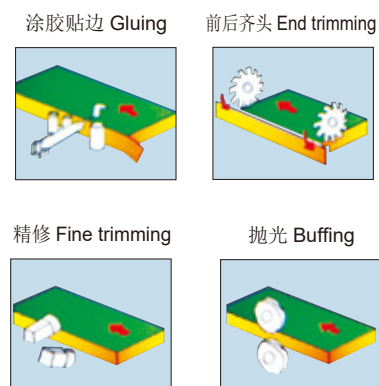
MGF115M 半自动封边机 Semi-automatic Edge BandER



技术参数 / Technical Parameters

型号 ITEM/MODEL	MGF115M
板料长度 Panel length	Min. 160mm(PVC)
板料宽度 Panel width	Min. 90mm
板料厚度 Panel thickness	10-45mm
封带宽度 Edge width	12-48mm
封带厚度 Edge thickness	0.4-3mm
进给速度 Feeding speed	6m/min
输入电压 In-put voltage	380V
输入频率 In-put frequency	50Hz
总功率 Total Power consumption	2.74kw
空气气压 Required air pressure	0.7Mpa
净重 Net weight	~ 400kg
尺寸 Overall dimension (LxWxH)	2320x800x1130mm

功能示意图:



MGF115MB 半自动封边机 Semi-automatic Edge BandER



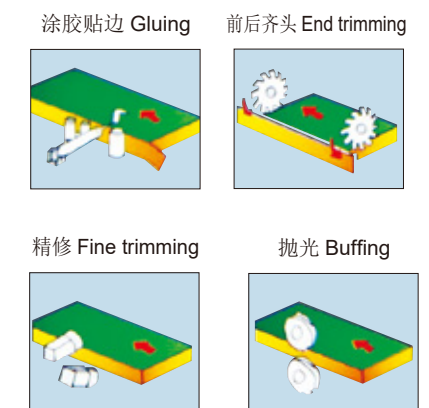
Optional



Technical Parameters

型号 ITEM/MODEL	MGF115MB
板料长度 Panel length	Min. 160mm(PVC)
板料宽度 Panel width	Min. 90mm
板料厚度 Panel thickness	10-45mm
封带宽度 Edge width	12-48mm
封带厚度 Edge thickness	0.4-3mm
进给速度 Feeding speed	7.4m/min
输入电压 In-put voltage	380V
输入频率 In-put frequency	50Hz
总功率 Total Power consumption	2.74kw
空气气压 Required air pressure	0.7Mpa
净重 Net weight	~ 430kg
尺寸 Overall dimension (LxWxH)	2320x800x1200mm

功能示意图:



MGB245 半自动封边机 Semi-automatic Edge BandER



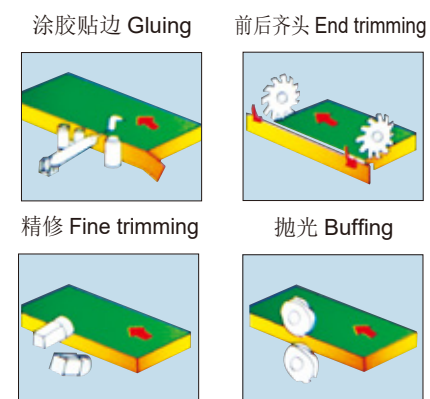
Optional



技术参数 / Technical Parameters

型号 ITEM/MODEL	MGB245
板料长度 Panel length	Min. 100mm (PVC)
板料宽度 Panel width	Min. 90mm
板料厚度 Panel thickness	10-45mm
封带宽度 Edge width	12-48mm
封带厚度 Edge thickness	0.4-3mm
进给速度 Feeding speed	6m/min
输入电压 In-put voltage	380V
输入频率 In-put frequency	50Hz
总功率 Total Power consumption	3.22kw
空气气压 Required air pressure	0.7Mpa
净重 Net weight	~ 430kg
尺寸 Overall dimension (LxWxH)	2400x800x1230mm

功能示意图:



MGM4/MGM5 半自动封边机 Semi-automatic Edge BandER



技术参数 / Technical Parameters

型号 ITEM/MODEL	MGM4/MGM5
板料长度 Panel length	Min. 100mm (PVC)
板料宽度 Panel width	Min. 90mm
板料厚度 Panel thickness	10-45mm
封带宽度 Edge width	12-48mm
封带厚度 Edge thickness	0.4-3mm
进给速度 Feeding speed	7.4m/min
输入电压 In-put voltage	380V
输入频率 In-put frequency	50Hz
总功率 Total Power consumption	4kw (COM4: 3.64kw)
空气气压 Required air pressure	0.7Mpa
净重 Net weight	~ 490kg
尺寸 Overall dimension (LxWxH)	2430x1130x1180mm

功能示意图:

